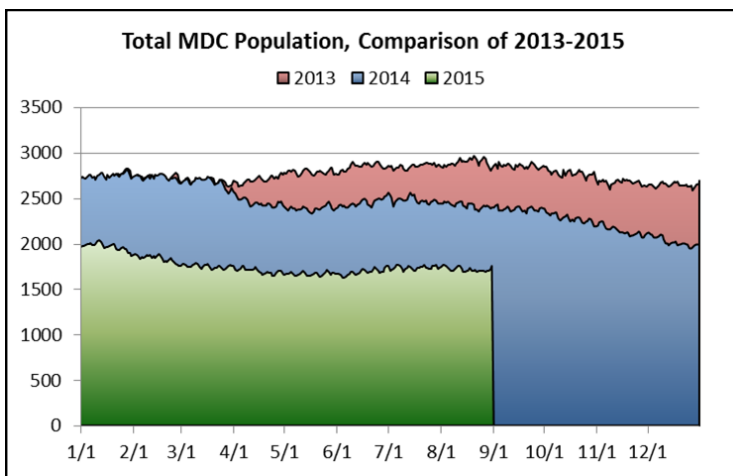




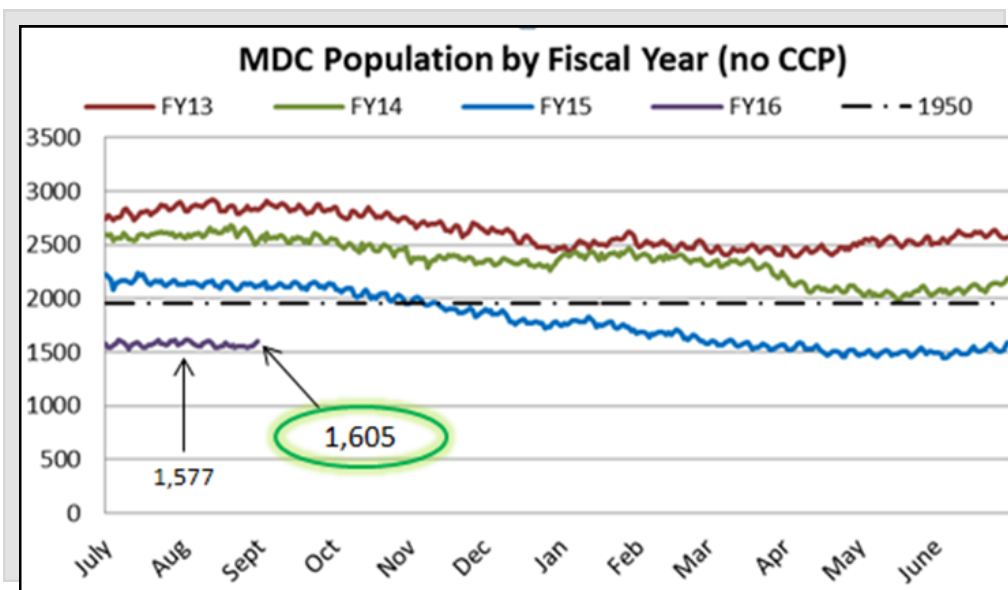
# Bernalillo County Metropolitan Detention Center

*Since late March of 2014, the MDC population has decreased overall. As of August 31, 2015 the population has decreased approximately 38% or 1,075 inmates.*



| Quick Figures for August                             |            |
|--|------------|
|  | Average    |
| On-Site Daily Population <sup>1</sup> :              | 1,572      |
| On-Site Male Population:                             | 1,267      |
| On-Site Female Population:                           | 305        |
| Community Custody Program (CCP) <sup>2</sup> :       | 153        |
| Total Average Jail Population (including OOC & CCP): | 1,724      |
| Total Consecutive Days 1,950 or less:                | <b>293</b> |

## Criminal Justice Reforms Continue to Impact Jail Population

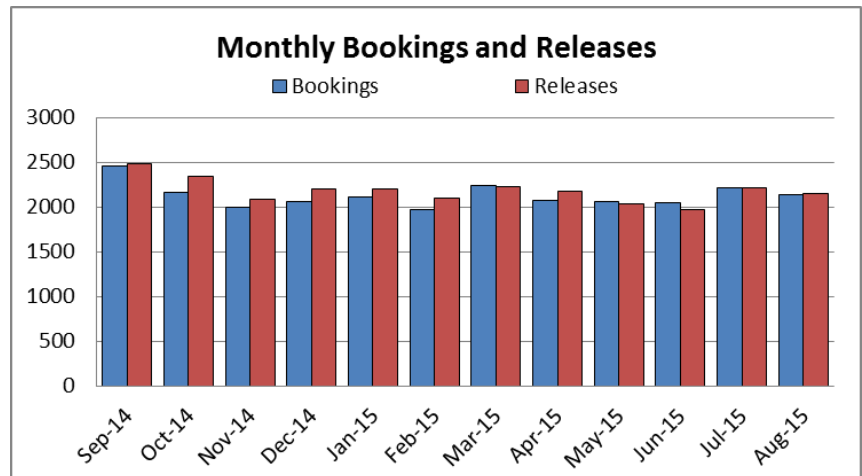


MDC actively collaborates with criminal justice partners to maintain the jail's population below 1,950<sup>4</sup>. Criminal justice reforms continue to impact the jail population. Recent increases are typical based on seasonal trends seen in recent years.

## Bookings and Jail Turnover

Annual bookings by fiscal year have declined since FY08. This reduction does not correspond with the overall decreasing population trends in recent months. Overall, monthly bookings have decreased over the last year, although the number of releases tends fluctuate at a similar rate.

The jail population reduction cannot be explained by the decrease in bookings alone. Jail population is driven by both admissions into the jail as well as the average length of stay (ALOS).



Jail turnover—which is calculated based on bookings, releases, and the average daily population—helps to demonstrate how quickly individuals are cycling through the jail. The turnover rate has increased in recent months, reflecting the decreasing size of the jail population and a decreasing length of stay as compared to previous years. [The average length of stay \(ALOS\) for August 2015 was 17.1% lower than for August 2014.](#)

## Criminal Justice Reform Initiatives

Since mid-March 2014, the County has partnered with the criminal justice family to design and implement numerous court initiatives aimed at creating efficiencies in the criminal justice system which have contributed to recent population reductions. The Criminal Justice collaborative continues to identify opportunities to realize additional efficiencies some of which will further impact the jail population.

Initiative Updates:

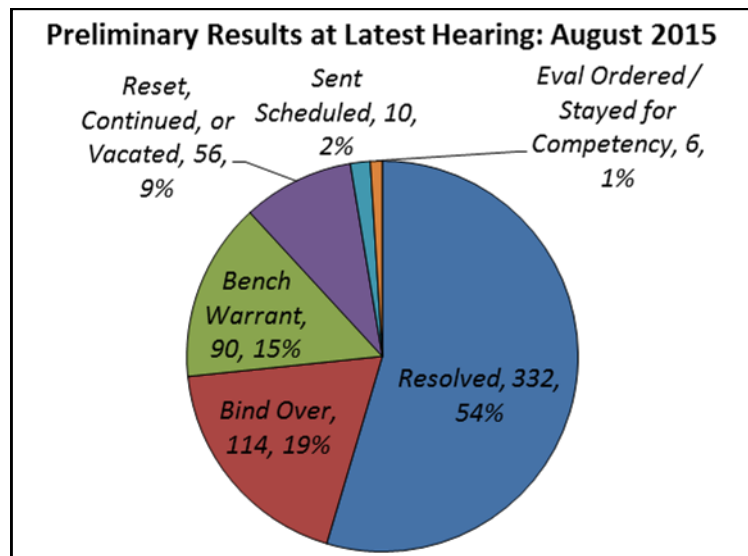
- Implementation in Metro Court and District Court of a pretrial release assessment instrument is set for September 2015.
- Bernalillo County and City of Albuquerque Supportive Housing Program has received numerous referrals and continues to grow.
- Updated MDC Population study underway.
- District Court piloting felony arraignment court reminder calls.

### ADA Case Resolution

- From October 14, 2014 through August 31, 2015, the new ADA has resolved approximately **2,267** cases for **1,546** people.
- 1 in 4 individuals with resolved cases had more than one case and these were often resolved on the same day.
- These resolutions were almost exclusively for criminal and traffic cases.
- A 16 week sample beginning April 2014 (one day per week) was previously collected for custody arraignments. For non-DV and DW cases, the resolution rate was 37.8%.
- Since the new ADA started, for non-DV and DW cases, the resolution rate was 53% AND there were 108 cases resolved not on the docket. **The ADA resolution rate is 15.2% higher than the 2014 sample of similar cases.**

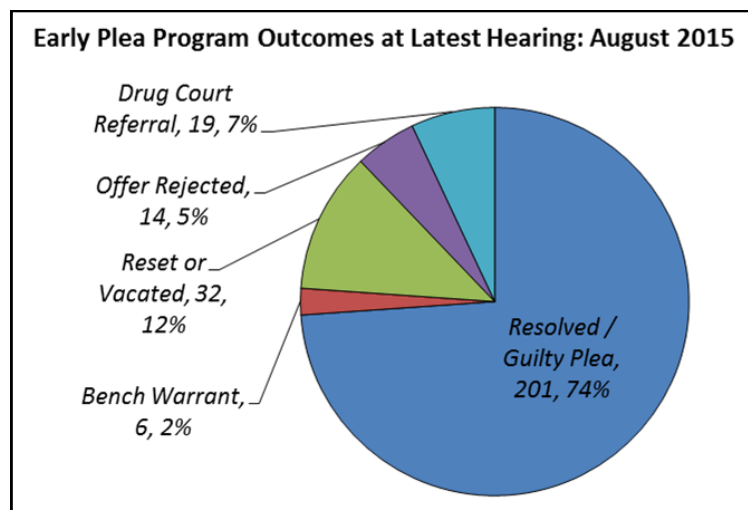
## Preliminary Hearings

- Between June 23, 2014 and August 31, 2015, a total of 1,015 hearings were scheduled for 611 cases (cases were at times reset and hearings for the same case for a separate incident were considered unique).
- At the latest hearing for the cases, approximately **54%** were resolved at the preliminary hearing. Outcomes such as the scheduling of a sentencing hearing will likely result in an upcoming resolution.
- Of the **332 cases that have been resolved** to date, 83% were resolved within one or two hearings.
- Due to the successful resolution of cases at the preliminary hearings, beginning in September the number of grand jury panel hearings held was reduced by two per week. Preliminary hearings will soon take place for a full day rather than part of a day and in August, plans are in place to add another day of these hearings.



## Early Plea Program

- While the Early Plea Program (EPP) was only recently expanded, early hearing results are promising. From March 23, 2015 and August 25, 2015, 294<sup>5</sup> hearings were scheduled for 272 cases.
- At the latest hearing for the cases, 74% of the cases were resolved (either sentenced or nolle pros) or the defendant had pled guilty.
- Of the 201 cases resolved to date, 95.5% were resolved at the first EPP hearing.



## NOTES

1 Total male and female added will not always equal the total onsite population. The headcounts include the infirmary, which includes males and females.

2 CCP has continued to decrease in recent months. On March 24, 2014, a new MOU was implemented that prohibits participation on CCP for individuals with certain charges.

3 The figure does not include those who are housed Out of County (OOC) as the County's goal is to achieve the 1,950 without housing inmates out of county.

4 Some of the previous outcomes provided were for sentencing hearings for the cases in question. These were removed and are no longer included in the current tallies. In addition, resets after a guilty plea were not included, as a plea was already made but the sentencing was upcoming on the case.

**For further information,  
contact the Bernalillo  
County Public Safety  
Division at 505-468-7008.**

