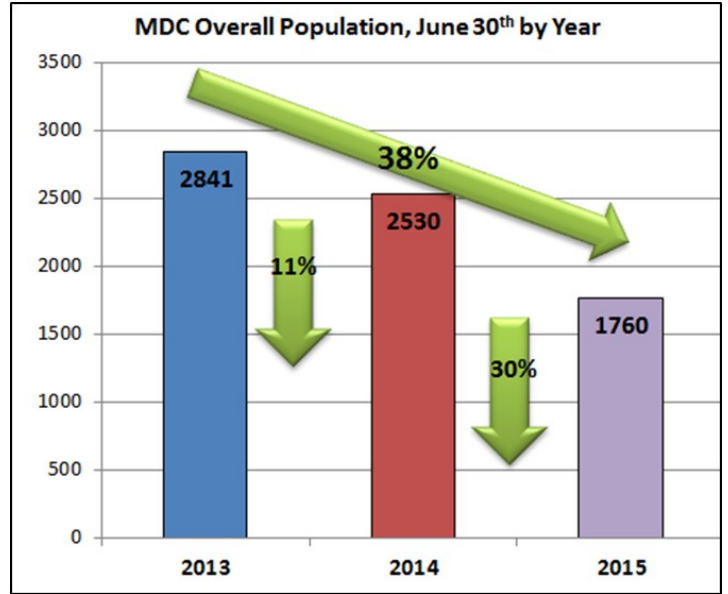


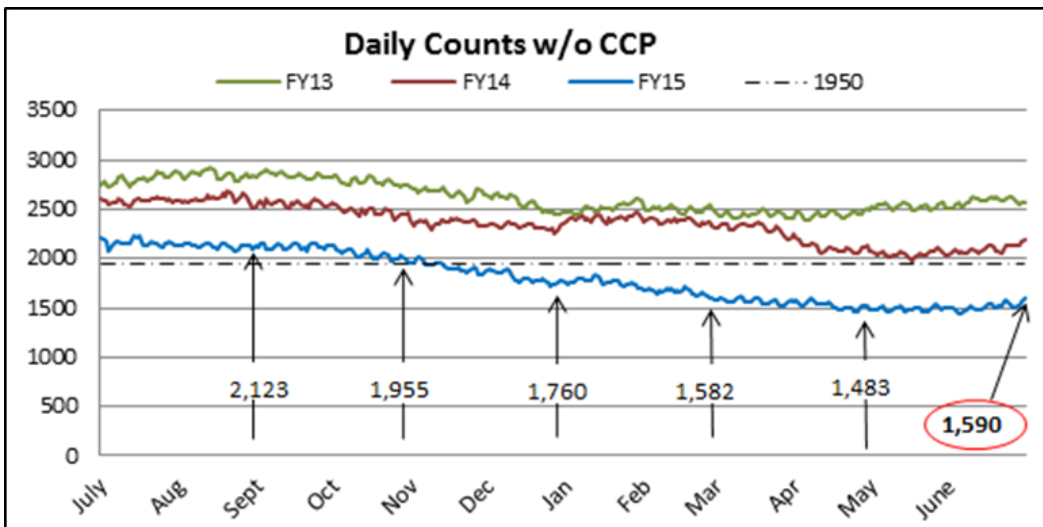


# BERNALILLO COUNTY METROPOLITAN DETENTION CENTER

Quick Figures for June	
	Average
On-Site Daily Population:	1,511
On-Site Male Population:	1,227
On-Site Female Population:	285
Community Custody Program (CCP):	179
Total Average Jail Population (including OOC & CCP):	1,690
Total Consecutive Days 1,950 or less:	<b>231</b>



## CRIMINAL JUSTICE REFORMS CONTINUE TO IMPACT JAIL POPULATION



MDC actively collaborates with criminal justice partners to maintain the jail's population below 1,950<sup>3</sup>. Criminal justice reforms continue to impact the jail population. Recent increases are typical based on seasonal trends seen in recent years.

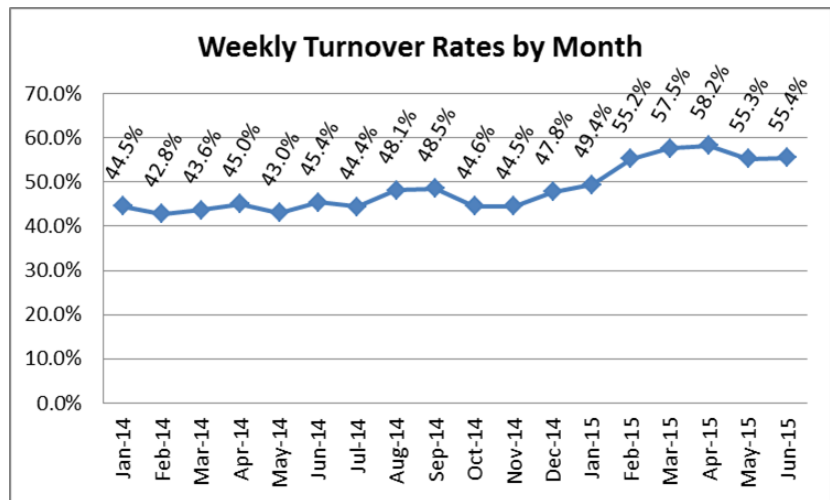
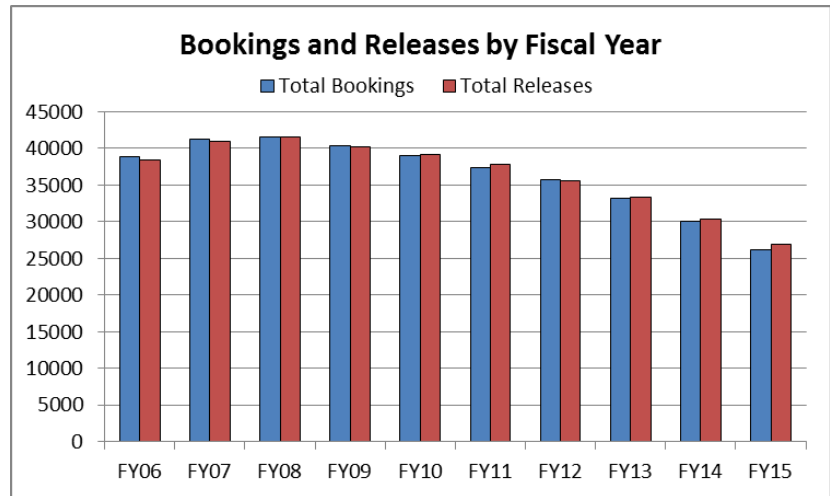
## BOOKINGS AND JAIL TURNOVER

Annual bookings by fiscal year have declined since FY08. This reduction does not correspond with the overall decreasing population trends in recent months.

The jail population reduction cannot be explained by the decrease in bookings alone. Jail population is driven by both admissions into the jail as well as the average length of stay (ALOS).

Jail turnover—which is calculated based on bookings, releases, and the average daily population—helps to demonstrate how quickly individuals are cycling through the jail. The turnover rate has increased in recent months, reflecting the decreasing size of the jail population and a decreasing length of stay as compared to previous years. [The average length of stay \(ALOS\) for June 2015 was 21.5% lower than for July 2014.](#)

Court initiatives are helping to increase turnover at MDC by improving efficiency in the criminal justice system.



## CRIMINAL JUSTICE REFORM INITIATIVES

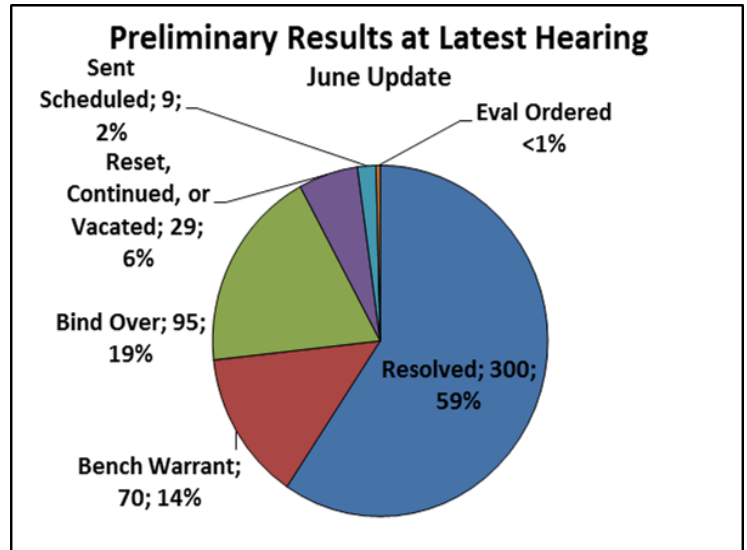
Since mid March 2014, the County has partnered with the criminal justice family to design and implement numerous court initiatives aimed at creating efficiencies in the criminal justice system which have contributed to recent population reductions. The Criminal Justice collaborative continues to identify opportunities to realize additional efficiencies some of which will further impact the jail population.

### *Initiatives in 2015:*

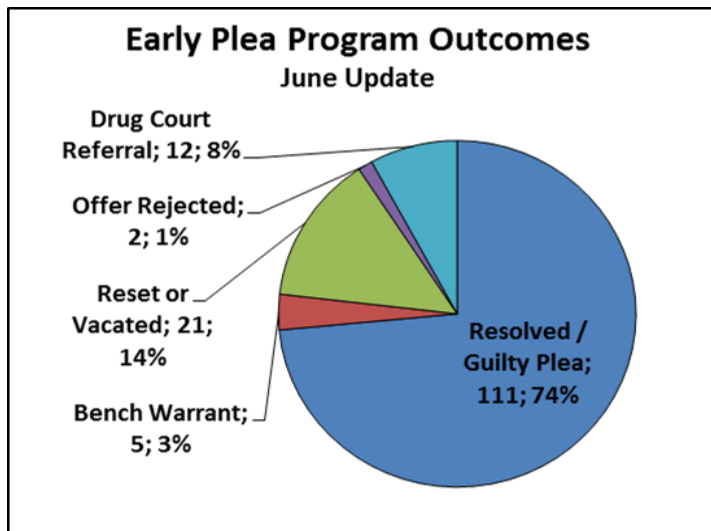
- **Warrant Amnesty Program**
- **Court Implementation of Pretrial Risk Assessment Tool**
- **Supportive Housing Program**
- **Pilot Court Reminder System**

## PRELIMINARY HEARINGS

- Between June 23, 2015 and June 29, 2015, a total of 864 hearings were scheduled for 509 cases (cases were at times reset and hearings for the same case for a separate incident were considered unique).
- At the latest hearing for the cases, approximately **59%** were resolved at the preliminary hearing. Outcomes such as the scheduling of a sentencing hearing will likely result in an upcoming resolution.
- Of the **300** cases that have been resolved to date, 83% were resolved within one or two hearings.
- Due to the success of the preliminary hearings at resolving cases, beginning in September the number of grand jury panel hearings held was reduced by two per week. Preliminary hearings will soon take place for a full day rather than part of a day and in August, plans are in place to add another day of these hearings.



## EARLY PLEA PROGRAM



- While the Early Plea Program was only recently expanded, early hearing results are promising. From March 23, 2015 and June 30, 2015, 162 hearings were scheduled.
- At the latest hearing for the cases, 74% of the cases were resolved (either sentenced or nolle pros) or the defendant had pled guilty.

## NOTES

\* For the month of April, there were several quick figures that were incorrectly reported due to a calculation error. The On-site daily population was correct. The following are the correct figures: On-Site Male: 1,244. On-Site Female: 279. CCP: 184; Total Average: 1,707. These calculations have been corrected for future reporting.

1 Total male and female added do not equal the total onsite population. The headcounts include the infirmary, which includes males and females.

2 The overall population of MDC includes all individuals in custody at the facility with the exception of individuals in RDT, out of the facility at the hospital, or on furlough. Inmates in CCP and those housed OOC are included in the overall population.

3 The figure does include those who are housed Out of County (OOC) as the County's goal is to achieve the 1,950 without housing inmates out of county.

4 The estimate for FY15 is based on an average of yearly changes that have occurred in the MDC Population for the last several years and uses the ending FY14 population as a starting point. This does not represent an official forecast, merely a graphic representation of how the population may fluctuate if the trend seen in previous years occurred. For these calculations CCP is held at 220 to approximate current CCP usage.

5 On March 24, 2014, a new MOU was implemented that prohibits participation on CCP for individuals with certain charges.

6 Current information has not been made available as of the writing of this report. This estimate is based on the figures obtained for November 2014 and is estimated based on the number of inmates housed out of county.