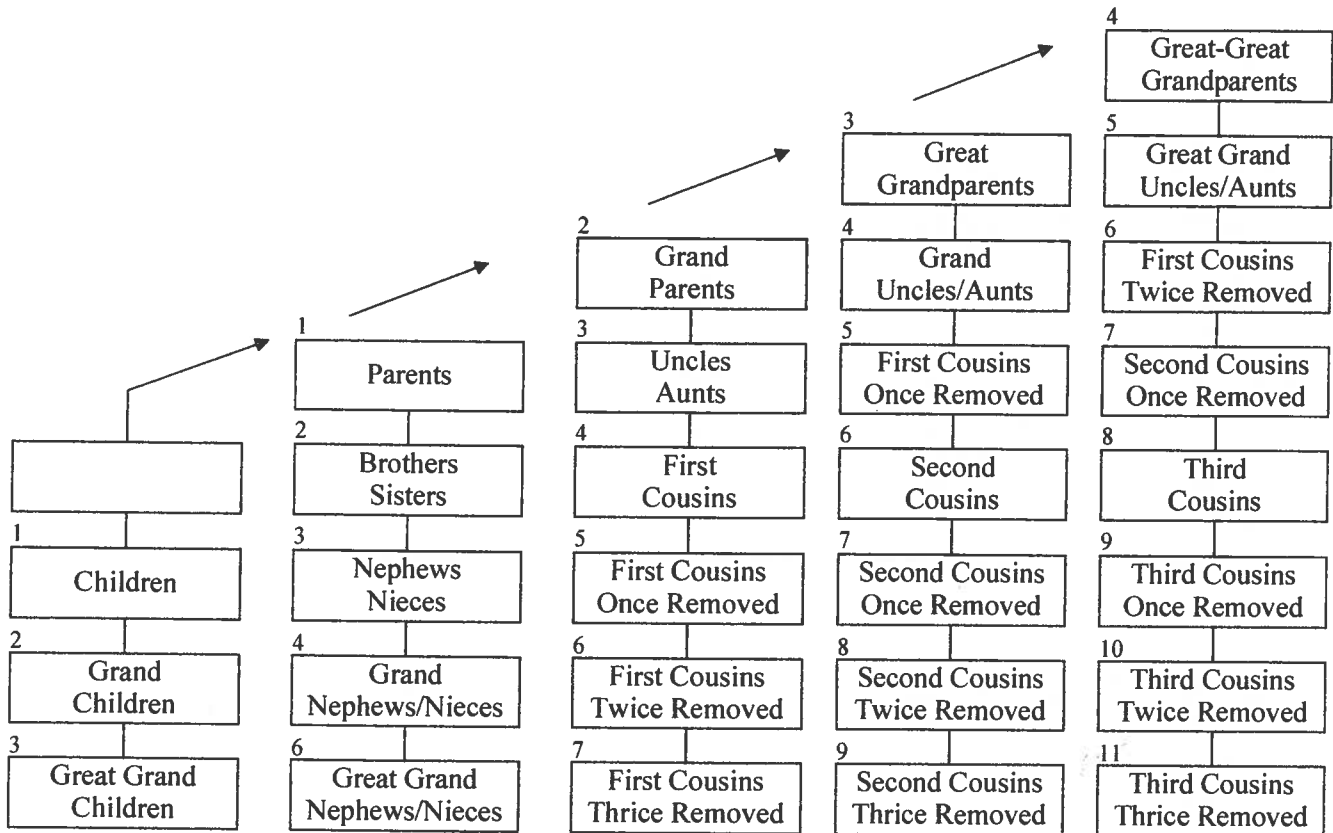


Degrees of Family Relationships

Degrees of relationship by blood (consanguinity)



INSTRUCTIONS:

For Consanguinity (relationships by blood) calculations:

Place the employee for whom you need to establish relationships by consanguinity in the blank box. The labeled boxes will then list the relationships by title and degree of distance from the employee.

Anyone in a box numbered 1, 2 or 3 is within the third degree of consanguinity.

For Affinity (relationships by marriage) calculations:

Place the spouse or Domestic Partner of the employee for whom you need to establish relationships by affinity in the blank box. The labeled boxes will then list the relationships by title and degree of distance from the employee's spouse or Domestic Partner.

A husband and wife are related in the first degree by marriage. For other relationships by marriage, the degree of relationship is the same as the degree of underlying relationship by blood.

“Relation by blood or marriage within the third degree” includes spouse, domestic partner, parent, mother-in-law, father-in-law, step-parent, children, domestic partner children, son-in-law, daughter-in-law, step-child, brother, step-brother, brother-in-law, sister, step-sister, sister-in-law, grandparent, grandchild, uncle, aunt, nephew, niece, great-grandchild, and great-grandparent.